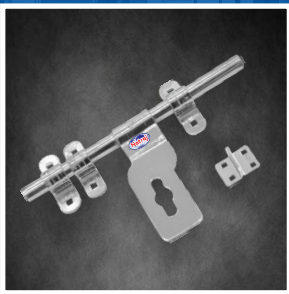




CATALOGUE



*“Your Partner
in Building Tools”*

www.natrajhardware.com



Company Profile:

Incorporated in the year 1991 by Late Mr. Jagdish Chand Gupta, Natraj is one of the leading name in manufacturing and exporting a wide range of Builder's Hardware, Construction Hardware, Garden & Agriculture Tools, Hand Tools, Industrial Fasteners and General Supplies.

NATRAJ – running under skilled and expert supervision, maintaining a strict control on quality right from the raw material stage to final stage of shipment is the reason for the trust of buyers in us. We have always focused our attention on market need, our standards and experience of more than 30 years in the industry has allowed us to promptly and completely satisfy the requirements of our clients.

Quality Policy:

- To reduce rate of rejection at all stages
- To improve customer satisfaction
- To meet scheduled delivery targets
- To conforming international standards
- To ensure product is procured with finest quality
- To narrow down product costing

Certification & Associations:

- ISO 9001-2015 & GMP Certified Company
- Government recognized Star Export House
- Associate Member, Federation of Indian Export Organizations
- Member, Chamber of Industry & Commerce Undertakings
- Member, North India Chamber of Commerce & Industry

Our Brands:



INDEX

1. GATE LATCH ALDROPS	04
2. TOWER & PAD BOLTS	05
3. HINGES	06
4. MORTISE HANDLES	07-08
6. DOOR LOCKS	09
7. BUILDER'S HARDWARE	10
8. GARDEN TOOLS	11
9. INDUSTRIAL FASTENERS	12
10. SPANNERS	13
11. HAND TOOLS	14-15
12. MISCELLANEOUS ITEMS	16
13. FINISHES & PACKING	17

GATE LATCH ALDROPS



NBH 101
Aldrop Brass-1

FEATURES

Size: 8"/10"/12"
Thickness: 12-16 mm
Finish: Brass



NBH 102
Aldrop Brass-2

FEATURES

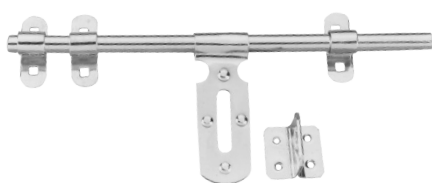
Size: 8"/10"/12"
Thickness: 12-16 mm
Finish: Brass



NBH 103
Aldrop Brass-3

FEATURES

Size: 8"/10"/12"
Thickness: 12-16 mm
Finish: Brass



NBH 104
Aldrop Riveted

FEATURES

Size: 6"/8"/10"/12"
Thickness: 9-13 mm
Finish: BCP / ZP



NBH 105
Aldrop Deluxe

FEATURES

Size: 6"/8"/10"/12"
Thickness: 10-14 mm
Finish: BCP



NBH 106
Aldrop Welcome

FEATURES

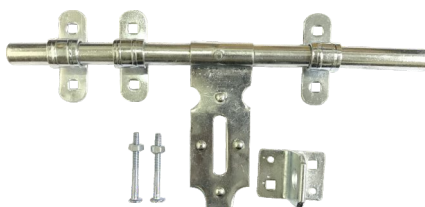
Size: 8"/10"
Thickness: 12-14 mm
Finish: BCP



NBH 107
**Aldrop Welcom
(Brass/Gold)**

FEATURES

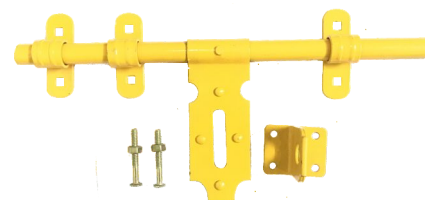
Size: 8"/10"
Thickness: 10-14 mm
Finish: Brass Golden



NBH 108
Aldrop Dual Cut

FEATURES

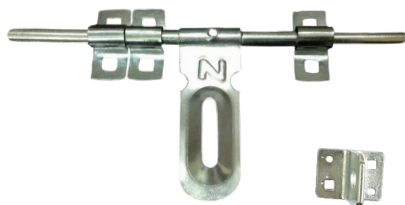
Size: 12"
Thickness: 16 mm
Finish: BCP / ZP



NBH 109
Aldrop Dual Cut-2

FEATURES

Size: 12"
Thickness: 16 mm
Finish: Powder Coated
Color: Yellow / Silver / Brown



NBH 110
Aldrop Scoop Type-1

FEATURES

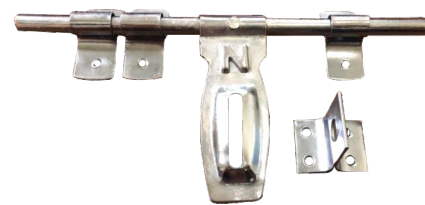
Size: 6"/8"/10"
Thickness: 10 mm
Finish: BCP / ZP



NBH 111
Aldrop Scoop Type-2

FEATURES

Size: 6"/8"/10"
Thickness: 10 mm
Finish: BCP / ZP



NBH 112
Aldrop Scoop Type-3

FEATURES

Size: 6"/8"/10"
Thickness: 10 mm
Finish: BCP / ZP

TOWER & PAD BOLTS



NBH 201
Tower Bolt Aluminium

FEATURES

Size: 3"/4"/5"/6"
Thickness: 10-12 mm
Finish: S.S. / Aluminium



NBH 202
Tower Bolt Brass

FEATURES

Size: 3"/4"/5"/6"
Thickness: 3/8" - 1/2"
Finish: Brass / BA



NBH 203
Tower Bolt S.S.

FEATURES

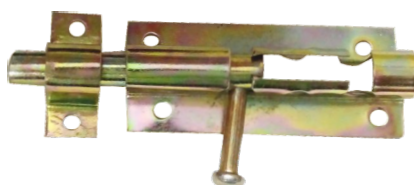
Size: 3"/4"/5"/6"
Thickness: 3/8" - 1/2"
Finish: S.S.



NBH 204
Tower Bolt (ZP)

FEATURES

Size: 3"/4"/5"/6"
Thickness: 9-12 mm
Finish: ZP



NBH 205
Tower Bolt Self Locking

FEATURES

Size: 3"/4"/5"/6"
Thickness: 10 mm
Finish: BCP / ZP / PC



NBH 206
Brenton Bolt

FEATURES

Size: 4"/6"
Thickness: 10-12 mm
Finish: BCP / ZP / PC



NBH 207
Tower Bolt (Black)

FEATURES

Size: 3"/4"/5"/6"
Thickness: 9-12 mm
Finish: ZP / PC



NBH 208
Tower Bolt Heavy

FEATURES

Size: 6"
Thickness: 10-12 mm
Finish: BCP / PC



NBH 209
Tower Bolt Extra Heavy

FEATURES

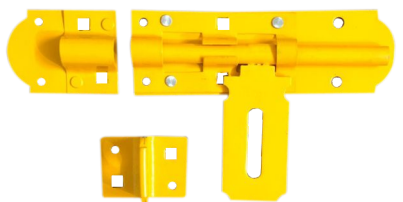
Size: 6"
Thickness: 10-12 mm
Finish: BCP / PC



NBH 301
Pad Bolt Heavy

FEATURES

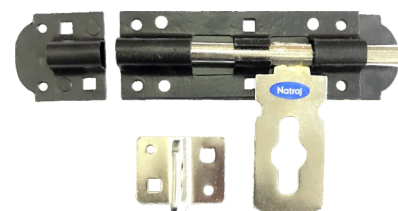
Size: 6"/8"
Thickness: 10 mm
Finish: BCP / PC



NBH 302
Pad Bolt Heavy Coloured

FEATURES

Size: 6"/8"
Thickness: 12-14 mm
Finish: PC
Colour: Yellow, Orange, Black

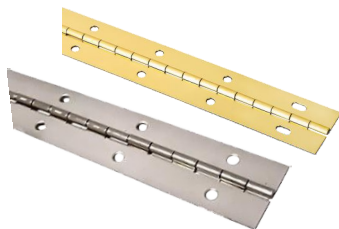


NBH 303
Pad Bolt Extra Heavy

FEATURES

Size: 6"/8"
Thickness: 12-14 mm
Finish: BCP / PC

HINGES



NBH 401
Piano Hinges

FEATURES

Size: 3300 / 3500 mm
Thickness: 0.5-0.6 mm
Finish: BCP / GZP



NBH 402
Tee Hinges PC

FEATURES

Size: 100 / 150 mm
Thickness: 1.5-2.0 mm
Finish: Powder Coated



NBH 403
Tee Hinges

FEATURES

Size: 100 / 150 mm
Thickness: 1.5-2.0 mm
Finish: BSP / ZP / SC



NBH 404
Cup Board Hinges

FEATURES

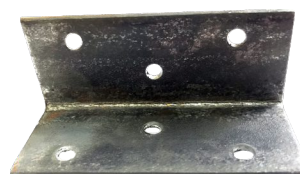
Dia: 35 mm
Angle: 165° Opening
Finish: BCP



NBH 405
Butterfly Hinges

FEATURES

Size: 100 / 127 / 152 mm
Thickness: 1.5-2.0 mm
Finish: Brass / SS / BA



NBH 406
Bed Angle Hinges

FEATURES

Size: 3"/4"/5"/6"
Thickness: 2.0-2.9 mm
Finish: BCP / ZP / SC



NBH 407
Butt Hinges Brass

FEATURES

Size: 3"/4"
Thickness: 1.7-2.0 mm
Finish: Brass



NBH 408
Butt Hinges Steel

FEATURES

Size: 2"/2-1/2"/3"/4"
Thickness: 1.5-2.5 mm
Finish: BCP / ZP / SC



NBH 409
Butt Hinges Bearing

FEATURES

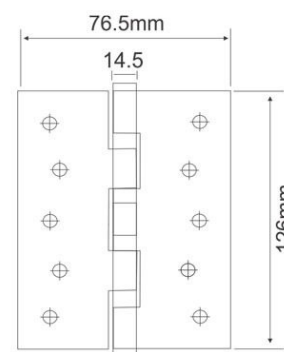
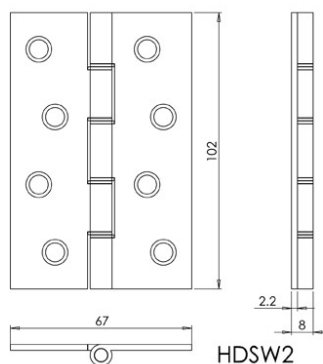
Size: 4"/5"/6"
Thickness: 2.5-3.5 mm
Finish: SS / BA



NBH 410
Bar Type Hinges

FEATURES

Size: 3/4"/1"/1.25"/1.5"/2"
Thickness: 17-40 mm
Finish: ZP / SC



Details mentioned are for reference only, they subject to change.

MORTISE HANDLES



NBH 501
B.S. 01

FEATURES

Size: 7"/8"
Finish: BS



NBH 502
B.A. 01

FEATURES

Size: 7"/8"
Finish: BA



NBH 503
C.P. 01

FEATURES

Size: 7"/8"
Finish: CP



NBH 504
B.B. 01

FEATURES

Size: 7"/8"
Finish: BB



NBH 505
B.S. 03

FEATURES

Size: 7"/8"
Finish: BS



NBH 506
B.A. 03

FEATURES

Size: 7"/8"
Finish: BA



NBH 507
B.R. 03

FEATURES

Size: 7"/8"
Finish: BR



NBH 508
B.B. 03

FEATURES

Size: 7"/8"
Finish: BB



NBH 509
B.B. 04

FEATURES

Size: 7"/8"
Finish: BB



NBH 510
C.A. 04

FEATURES

Size: 7"/8"
Finish: CA



NBH 511
C.P. 04

FEATURES

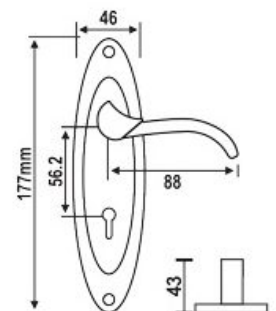
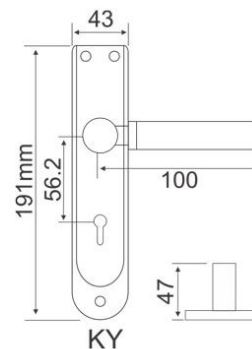
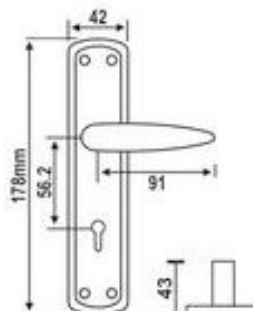
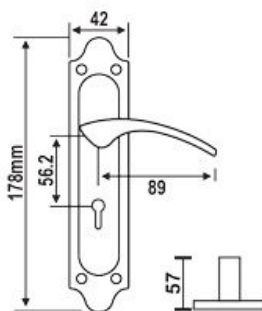
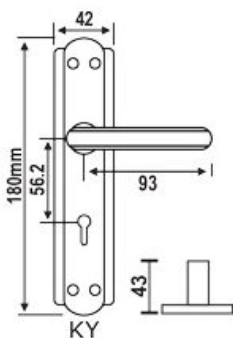
Size: 7"/8"
Finish: CP



NBH 512
B.S. 05

FEATURES

Size: 7"/8"
Finish: BS



Details mentioned are for reference only, they subject to change.

MORTISE HANDLES



NBH 513
B.A. 06

FEATURES

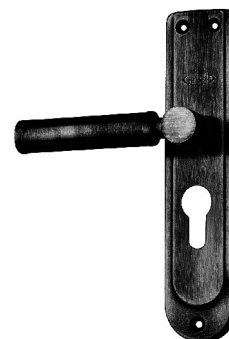
Size: 7"/8"
Finish: BA



NBH 514
B.R. 06

FEATURES

Size: 7"/8"
Finish: BR



NBH 515
B.B. 06

FEATURES

Size: 7"/8"
Finish: BB



NBH 516
B.S. 02

FEATURES

Size: 7"/8"
Finish: BS



NBH 517
C.P. 02

FEATURES

Size: 7"/8"
Finish: CP



NBH 518
B.R. 02

FEATURES

Size: 7"/8"
Finish: BR



NBH 519
BRASS HANDLE
TYPE 1

FEATURES

Size: 6"/8"
Finish: Brass



NBH 520
ALUMINIUM
HANDLE TYPE 1

FEATURES

Size: 6"
Finish: SS



NBH 521
ALUMINIUM
HANDLE TYPE 2

FEATURES

Size: 6"
Finish: Aluminium



NBH 522
BRASS HANDLE
TYPE 2

FEATURES

Size: 6"/8"
Finish: Brass



NBH 523
BRASS HANDLE
TYPE 3

FEATURES

Size: 6"/8"
Finish: Brass



NBH 524
BRASS HANDLE
TYPE 4

FEATURES

Size: 6"/8"
Finish: Golden Anodized

DOOR LOCKS



NBH 701
LOCK BODY
CY4 BL

FEATURES
Big Pin Cylindrical Lock
Size: 45x85mm



NBH 702
LOCK BODY
CY LB

FEATURES
Big Pin Cylindrical Lock
Size: 45x85mm



NBH 703
LOCK BODY
SMALL BISC

FEATURES
Small Pin Cylindrical Lock
Size: 45x70mm



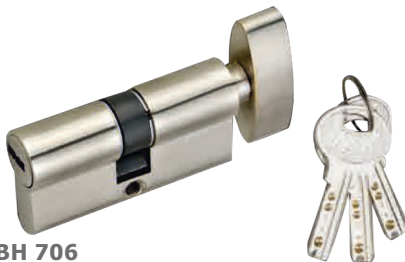
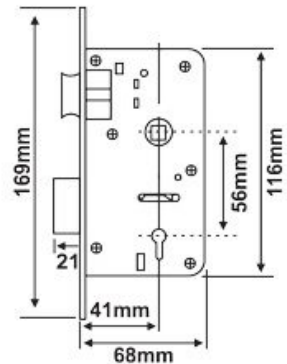
NBH 704
LOCK BODY
KY3 BL

FEATURES
Double Action
Size: 70mm



NBH 705
LOCK BODY
TYPE 1

FEATURES
Lever: 6
Size: 65mm



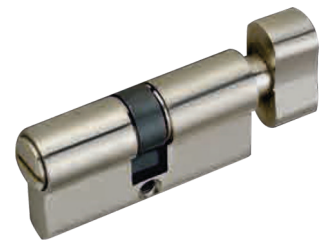
NBH 706
PIN CYLINDER (OSK)

FEATURES
Size: 60, 70, 80, 90, 100MM
Material: Brass



NBH 707
PIN CYLINDER (BSK)

FEATURES
Size: 60, 70, 80, 90, 100MM
Material: Brass



NBH 708
PIN CYLINDER (Coin Cut)

FEATURES
Size: 60MM
Material: Brass



NBH 709
RIM LOCK

FEATURES
Size: Standard
Keys: SS Ultra 3 Keys / Regular Keys
Finish: BCP / SS



NBH 710
NIGHT LOCK

FEATURES
Size: Standard
Keys: SS Ultra 3 Keys / Regular Keys
Finish: PC



NBH 711
RIM LOCK

FEATURES
Size: Standard
Keys: SS Ultra 3 Keys / Regular Keys
Finish: PC



NBH 801
CABINET HANDLE

FEATURES

Size: 4"/6"/8"/10"
Thickness: 9-12 mm
Finish: SS / BCP



NBH 802
CHEST HANDLE

FEATURES

Size: 4"
Thickness: 1-1.65 mm
Finish: BCP / ZP



NBH 803
PAD LOCKS

FEATURES

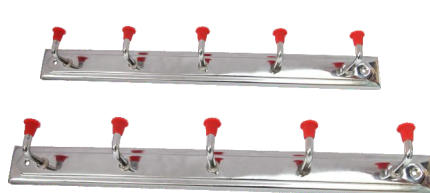
Size: 80 / 90 mm
Keys: 2/3 Brass Keys
Finish: BCP



NBH 804
MULTI PURPOSE LOCK

FEATURES

Size: Standard
Thickness: 2/3 Keys
Finish: BCP



NBH 805
MS COAT HOOKS

FEATURES

Size: 4-12 Hooks
Thickness: 0.9-2.0 mm
Finish: BCP / PC



NBH 806
BRASS BALL CATCH

FEATURES

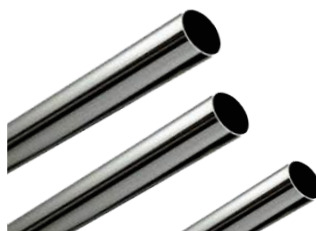
Size: S/M/L
Finish: Brass



NBH 807
PVC MAGNET CATCH

FEATURES

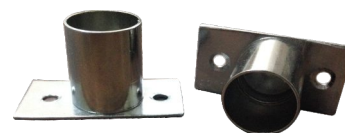
Size: S/M/L
Finish: Powder Coated



NBH 808
CURTAIN PIPE

FEATURES

Dia: 3/4"-1"
Length: 10' / 12'
Finish: BCP / ZP / PC



NBH 809
CURTAIN BRACKET

FEATURES

Size: Standard
Thickness: 0.9-1.5 mm
Finish: BCP / ZP / PC



NBH 810
DOOR CLOSER

FEATURES

Size: Standard
Bearing Load: 40-55 kg
Finish: PC



NBH 811
HOLD FAST

FEATURES

Size: 3+1 - 8+1
Thickness: 0.75 - 3 mm
Finish: BCP / ZP



NBH 812
HASP & STAPLE

FEATURES

Size: 3"/4"/5"/6"
Thickness: 0.7-1.75 mm
Finish: BCP / PC



NGT 101
BABY RAKES

FEATURES

Size: 4-6 Teeth
Thickness: 2-2.5 mm
Finish: PC



NGT 102
BRACKET TYPE

FEATURES

Size: 6-16 Teeth
Thickness: 2-2.5 mm
Finish: PC



NGT 103
BOW TYPE

FEATURES

Size: 10/12/14 Teeth
Thickness: 2-2.5 mm
Finish: PC



NGT 104
TWISTED TYPE

FEATURES

Size: 10/12/14 Teeth
Thickness: 1.25-2.25 mm
Finish: PC



NGT 105
EXTRA HEAVY

FEATURES

Size: 12/14 Teeth
Thickness: 1.75-2.25 mm
Finish: PC



NGT 106
NAIL TYPE

FEATURES

Size: 8/10/12/14 Teeth
Nail Thickness: 4-7 mm
Finish: PC



NGT 107
HANDLE TYPE

FEATURES

Size: 12/14/16 Teeth
Handle Length: 4 Feet
Finish: PC



NGT 108
PLAIN TYPE 1

FEATURES

Size: 6-16 Teeth
Thickness: 1.20-2.50 mm
Finish: PC



NGT 109
PLAIN TYPE 2

FEATURES

Size: 6-16 Teeth
Thickness: 1.20-2.50 mm
Finish: PC



NGT 110
DRAW HOE

FEATURES

Size: 4"-10"
Thickness: 1.25-2.0 mm
Finish: PC



NGT 111
SPADE

FEATURES

Size: Standard
Handle Length: 4 Feet
Finish: PC



NGT 112
CUT / PIT SAW

FEATURES

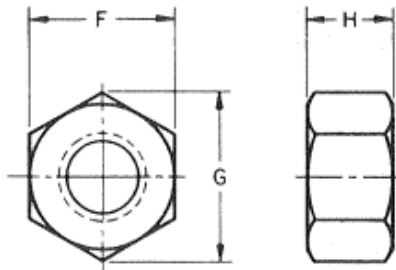
Size: 6'/7'/8'
Thickness: 0.7-1.25 mm
Finish: Polished / SC



NIF 101 HEX NUT

FEATURES

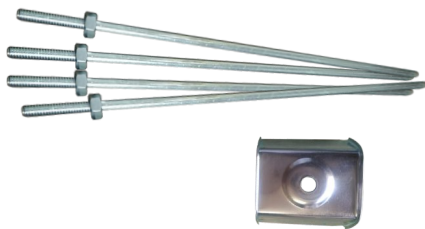
Dia: 3/8", 5/10", 1/4"
Length: 7/32", 17/64", 21/64"
Finish: ZP / BCP / SC



NIF 102 HEX BOLT

FEATURES

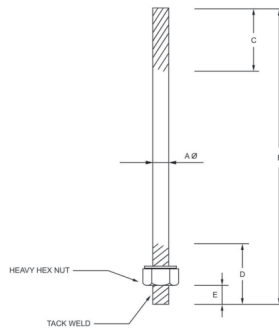
Dia: 3/8", 5/10", 1/4"
Length: 1-6"
Finish: ZP / BCP / SC



NIF 103 STRAIGHT ROD

FEATURES

Size: 10"/12"
Thickness: 6mm/8mm
Finish: ZP



NIF 104 RIVETS

FEATURES

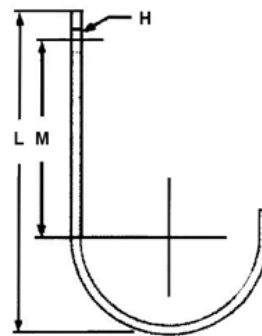
Size: 8 / 10 No.
Finish: ZP / SC



NIF 105 PIPE HOOK

FEATURES

Size: 3"-9"
Thickness: 5-8 mm
Finish: BCP / ZP



NIF 106 ROOFING BOLT

FEATURES

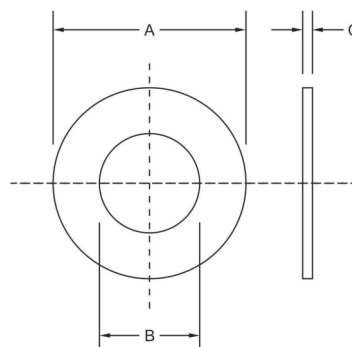
Size: 1/2"-8"
Finish: BZP / BCP / HDG



NIF 107 WASHERS

FEATURES

ID: 1.1-66 mm
OD: 3.2-115 mm
Thickness: 0.3-9.0 mm
Finish: ZP / BCP / SC



NIF 108 L/ANGLE HOOKS

FEATURES

Size: 3"-9"
Thickness: 5-8 mm
Finish: BCP / ZP

SPANNERS



NHTS 101 CROSS WHEEL SPANNER

FEATURES

Size: 14" x 14 mm
Punch Size: 17 x 19 x 21 x 23, 24, 1/2"
Finish: BCP / ZP / PC



NHTS 102 CROSS WHEEL SPANNER REINFORCED

FEATURES

Size: 14" x 16 mm
Punch Size: 17 x 19 x 21 x 23, 24, 1/2"
Finish: BCP / ZP / PC



NHTS 103 WHEEL SPANNER WITH TOMMY BAR

FEATURES

Spanner Size: 26 x 400 mm
Tommy Bar Size: 19 x 400 mm
Finish: BCP / ZP / PC



NHTS 104 L TYPE SPANNER WITH TYRE LEVER

FEATURES

Dia: 14-16 mm
Punch Size: 19 / 21 mm
Finish: BCP / ZP / PC



NHTS 105 RING SPANNER CARBON STEEL

FEATURES

Size: 6x7-30x32 mm
Finish: BCP
Available in sets in pouch pack & plastic rack



NHTS 106 BI-HEXAGONAL RING SPANNER CRV ELLIPTICAL PANEL

FEATURES

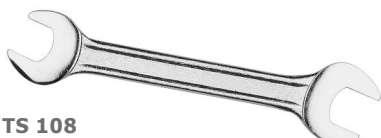
Size: 6x7-30x32 mm
Finish: Full Polish
Available in sets in pouch pack & plastic rack



NHTS 107 BI-HEXAGONAL RING SPANNER CRV ELLIPTICAL PANEL

FEATURES

Size: 6x7-30x32 mm
Finish: Satin
Available in sets in pouch pack & plastic rack



NHTS 108 DOUBLE OPEN END SPANNER CARBON STEEL

FEATURES

Size: 6x7-30x32 mm
Finish: BCP
Available in sets in pouch pack & plastic rack



NHTS 109 DOUBLE OPEN END SPANNER CRV ELLIPTICAL PANEL

FEATURES

Size: 6x7-30x32 mm
Finish: Full Polish
Available in sets in pouch pack & plastic rack



NHTS 110 DOUBLE OPEN END SPANNER CRV ELLIPTICAL PANEL

FEATURES

Size: 6x7-30x32 mm
Finish: Satin
Available in sets in pouch pack & plastic rack

COMBINATION SPANNERS



NHTS 111 CARBON STEEL

FEATURES

Size: 6-32 mm
Finish: BCP
Available in sets in pouch pack & plastic rack



NHTS 112 CRV ELLIPTICAL PANEL

FEATURES

Size: 6-32 mm
Finish: Full Polish
Available in sets in pouch pack & plastic rack



NHTS 113 CRV ELLIPTICAL PANEL

FEATURES

Size: 6-32 mm
Finish: Satin
Available in sets in pouch pack & plastic rack



NHTS 114 CRV RAISED PANEL

FEATURES

Size: 6-32 mm
Finish: Matt
Available in sets in pouch pack & plastic rack



NHTS 115 WITH RUBBER GRIP

FEATURES

Size: Set of 12Pcs / 14 Pcs
Finish: Mirror



NHTS 116 WITH POUCH PACKING

FEATURES

Size: Set of 8/12/14/25 Pcs.
Finish: Mirror / Satin / Full Polish



NHT 201
BENCH VICE

FEATURES

Size: 3"/4"/5"/6"/8"
Finish: PC / Polished Jaws



NHT 202
PIPE WRENCH

FEATURES

Size: 8"/10"/12"/14"/18"/24"/36"/48"
Finish: PC / Polished Jaws



NHT 203
CARPENTER PINCER

FEATURES

Size: 6"/7"/8"
Finish: PC / Polished Jaws
With & Without Insulation Grip



NHT 204
TINMAN SNIP

FEATURES

Size: 6"/7"/8"
Finish: PC / Polished Jaws
With & Without Insulation Grip



NHT 205
CROW BAR

FEATURES

Size: 4/5/6 Feet
Finish: PC



NHT 206
BALL PIN HAMMER

FEATURES

Size: 115/225/345/450/675/900/1120 gm
Finish: ZP
Available with & without Wooden Handle



NHT 207
CLAW HAMMER

FEATURES

Size: 225/345/450/675/900/1120 gm
Finish: BZP
Available with & without handle



NHT 208
MASON HAMMER

FEATURES

Size: 2/2.5/3 LBS
Finish: PC
Available with & without handle



NHT 209
SLEDGE HAMMER

FEATURES

Size: 2-20 LBS
Finish: PC / Polished Head
Available with & without handle



NHT 210
PLUMB BOB AFRICAN

FEATURES

Size: 400/450 gm
Finish: BCP / ZP



NHT 211
PLUMB BOB AFRICAN

FEATURES

Size: 400/450 gm
Finish: Powder Coated



NHT 212
PLUMB BOB CONICAL

FEATURES

Size: 100/200/300/400/500/600 gm
Finish: BCP / PC



NHT 213
MILL BASTARD FILE
FEATURES

Size: 200/250mm
Finish: Self / Blackened
Available in single piece pouch packing



NHT 214
FARMER'S OWN FILE
FEATURES

Size: 200/250mm
Finish: Self / Blackened
Available in single piece pouch packing



NHT 215
SLIM TAPER FILE
FEATURES

Size: 100/125mm
Finish: Self / Blackened
Available in skin card packing



NHT 216
CHARCOL IRON
FEATURES

Size: Standard
Handle: Wooden



NHT 217
SMOOTH JACK PLANE
FEATURES

Size: 4/5 No.
Finish: BCP / Plastic Handle
Accessories: Brass



NHT 218
JACK PLANE IRON BLADE
FEATURES

Size: 50mm
Finish: Self



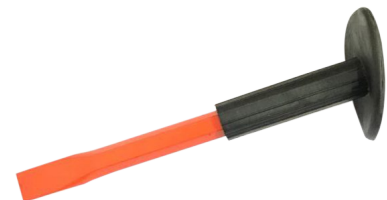
NHT 219
WELL PULLEY
FEATURES

Size: 8/10/12/14 No.
Finish: PC



NHT 220
BAR BENDING PLATE
FEATURES

Size: 6-24mm
Finish: PC



NHT 221
COLD CHISEL WITH GRIP
FEATURES

Size: 8"/10"/12" x 15-17mm
Finish: PC



NHT 222
TROWEL
FEATURES

Size: 4"/8"
Finish: BZP / SC



NHT 223
GREASE BUCKET
FEATURES

Size: 3 Ltr without wheels
5 Ltr with & without wheels
10/15/20 Ltr with wheels
Finish: PC



NHT 224
GREASE GUN
FEATURES

Size: 15/32 Oz
Finish: PC / BCP
Available with fix & flexible spout



NMI 101
LONG NECK TAP

FEATURES

Size: Standard

Finish: BCP



NMI 102
SHORT NECK TAP

FEATURES

Size: Standard

Finish: BCP



NMI 103
BIB COCK TAP

FEATURES

Size: Standard

Finish: BCP



NMI 104
TAP WITH LOCK

FEATURES

Size: Standard

Finish: BCP



NMI 105
WEIGHING CIRCULAR SCALE

FEATURES

Size: 100/200 kgs

Accessories Finish: BCP



NMI 106
SPRING BALANCE

FEATURES

Size: 25/50/100 kgs

Accessories Finish: BCP



NMI 107
MASON SCALE

FEATURES

Size: Standard

Finish: BCP / PC



NMI 108
BRAIDED HOSE PIPE

FEATURES

Dia: 1/2"-1"

Length: 50'-120'

Bursting Pressure: 20-24 kg/cm²



NMI 109
CLEAR HOSE PIPE

FEATURES

Size: 6mm ID x 30Mtr

Height: 4"

Finish: Clear / Self



NMI 110
HOSE PIPE

FEATURES

Dia: 1/2"-1"

Length: 50'-120'

Bursting Pressure: 20-24 kg/cm²



NMI 111
IRON PAN

FEATURES

Size: 14"/16"/18"

Finish: BZP / SC



NMI 112
BUCKET

FEATURES

Size: 5/10/15 Ltr

Finish: Aluminium Anodized



NMI 113
TOPE

FEATURES

Size: 12x15, 12x19, 12x23, 24x30, 42x50

Finish: Aluminium Anodized

FINISHES

BCP: Bright Chrome Nickel Plated
ZP: Zinc Plated
PC: Powder Coated Paint
BS: Black Silver Nickel Plated
BA: Brass Antique Nickel Plated
CP: Chrome Nickel Plated
BB: Black Chrome Nickel Plated
BR: Brown Chrome Nickel Plated
SS: Stainless Steel
SC: Self Colour / Self Skin
HDG: Hot Dip Galvanised

PACKING AVAILABLE IN:

1. Pouch Packing
2. Kit Packing
3. Corrugated Box
4. Jute Bags
5. Pallet Packing
6. Blister Packing
7. Rack Packing
8. Skin Card Packing

NOTES



Manufacturer & Exporter:

NATRAJ STEEL INDIA J.C. NATRAJ OVERSEAS

📍 Globe Colony, Industrial Area, Jalandhar - 144004 (Pb.) INDIA
🌐 www.natrajhardware.com, www.jcnatraj.com
✉ info@natrajhardware.com, natrajhardware@yahoo.com
☎ +91 181 5030500, +91 98886 30500, +91 96460 70007
📞 +91 78372 70007

Scan QR Code for
Contact Information



Scan QR Code for
Website

